

We are Rohleder.

Away from the hustle of city life, one of Europe's leading, state-of-the-art **home textile producers** is located in Konradsreuth, Bavaria - Hitex-Manufaktur Rohleder.

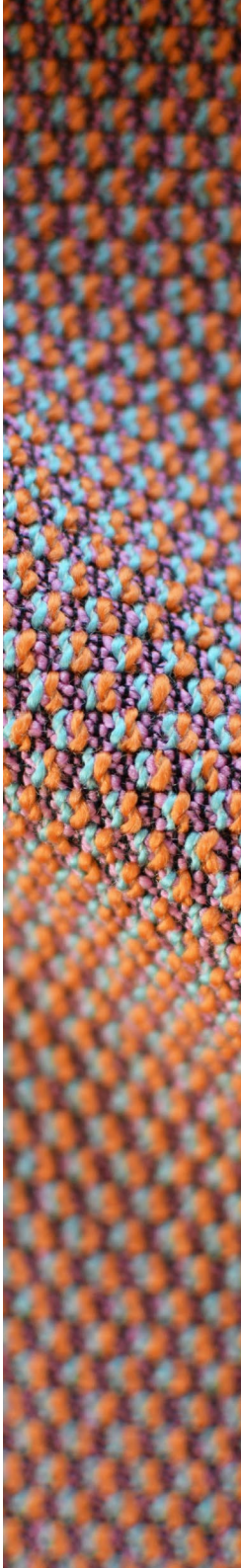
The fabrics we produce are amongst the finest in the industry – worldwide, the name Rohleder with its **Q2, Charmelle and Infinity** brands is synonymous with highest quality. Interiors come to life with our fabrics. They generate ambience – puristic, elegant, comforting and indulging.

Our commitment to the environment.

Our goal is to **maintain an intact ecosystem**. This means that we not only pay attention to minimizing energy consumption, but also continuously work on the greatest possible **conservation of water and air, environment and climate**. For example, our fabrics go through a finishing process with thermo-mechanical equipment - in this process we completely dispense with the addition of chemical additives.

Our fabrics are tested according to the strictest requirements by the Association for the Promotion of Body-Tolerant Textiles at the **ITV Denkendorf** and have been awarded the **FKT label**.

In addition, Rohleder was awarded the title of **Germany's first climate-neutral weaving mill** as a DGM supporting member.



The fabric brand for upholstery.



The fabric brand for upholstery.

Product features

- Made in Germany
- Without chemical treatment
- Washable and easy to clean
- Skin friendly and medically tested
- Suitable for allergy sufferers
- 5-year warranty
- High rub resistance
- Excellent lightfastness
- Service-Hotline +49 9292 59126



## This is our Hitex® fiber.

By exclusive use of innovative Hitex®-fibers, which have been specifically developed for Rohleder, our fabrics offer **excellent usage and care properties** – **without the use of chemical additives**.

Our Hitex® yarns stand out in many ways compared to natural fibers and offer an excellent ecobalance. However, please make sure to keep your Q2 fabric away from heat sources like hot-water bottles, heating pads, irons or electric blankets.

We are here for you.  
Please feel free to call  
us on our service hotline.

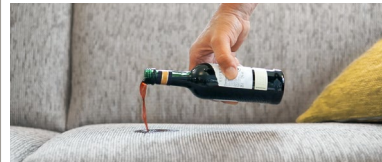
**Q2 Service-Hotline:**  
**+49 9292 59126**

Mondays - Thursdays:  
8:00 a.m. – 5:00 p.m.  
Fridays:  
8:00 a.m. – 2:00 p.m.



## How to remove stains from Q2 brand fabrics:

### Oil-based stains and other food stains



- Betadine
- Ketchup
- Mustard
- Red wine
- Chocolate

Oil-based stains can be removed with conventional detergents (Persil, washing-up liquid etc.).

- Fresh stains should be removed with a clean cloth. / Dried-on stains should be soaked prior to cleaning.
- Wash off the stain with a warm soapy solution using a sponge.
- Wash off remaining soap (tensides) with plenty of clean water.

### Solvent-based stains



- Lipstick
- Nail polish
- Ballpoint pen
- Felt-tip pen
- Shoe polish

Solvent-based stains can be removed with PURE acetone (without additives like gelatine), available from a chemist.

- Carefully apply acetone around the stain.
- Absorb with a soft, clean, white, absorbent cloth as soon as stain dissolves.
- Procedure may have to be repeated.
- Acetone will disappear completely.

### Crocking caused by dye-stuff used on other textiles



- Denim
- Other textiles

Discolouring caused by crocking of dyestuff used on other textiles can be removed by using a solution of one part bleach to 10 parts of water.

- Dab discoloured area with the solution.
- Dyestuff particles of the discolouring will be dissolved within 15 – 20 min.
- Absorb the dissolved dyestuff particles with a clean, white cloth.
- Thoroughly rinse out remaining bleach solution.

More detailed information on care and cleaning can be found at [rohleder.com](http://rohleder.com)



cleaning video

## How to care for your Q2 brand fabric:

- Removable covers and pillow cases can be washed in the washing machine at 30 °C on the delicate cycle.
- Regular vacuuming with the upholstery nozzle of the vacuum cleaner at medium level
- Wipe the upholstery several times a year with a clean, damp cloth to reduce static charge.



do not allow the fabric to come into contact with sources of heat



do not iron



dry at low temperature



do not put Velcro tape or pointed objects on the fabric

## How to protect your Q2 brand fabrics:

- Do not bring any heat sources onto the fabric, e.g. irons, heating blankets, etc.
- By avoiding snagging with pointed objects (jewellery, fasteners, etc.) or Velcro strips. Particular care should be taken with coarse qualities.

